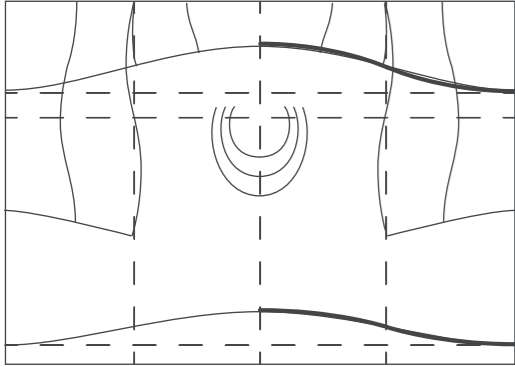


tshirts and coat BODY and SLEEVE



STEP 1: mark point A (fabric edge) to 1/4 fabric width

STEP 2: pivot template and repeat from fabric centre line to 1/4 fabric width

STEP 3: flip template and repeat steps 1&2 to right side

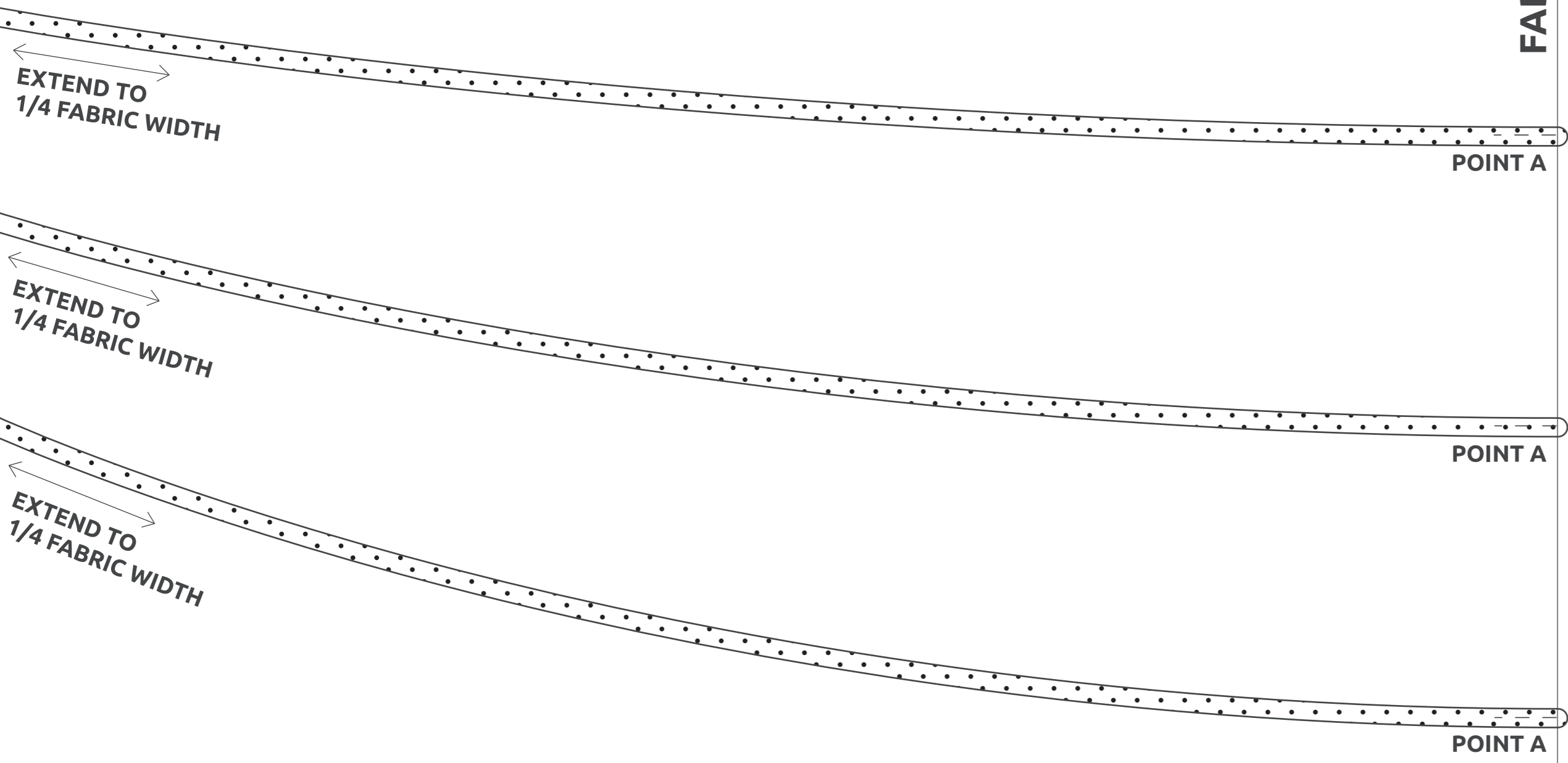
STEP 4 (BODY): pre-finish, cut, ROTATE, sew

STEP 4 (SLEEVE): pre-finish, cut, SWAP, sew

RIGHT HAND SIDE

FABRIC EDGE (STEP 1)

FABRIC CENTRE
LINE (STEP 2)



OPTION 1 (SHALLOW)
CUSTOM BODY / SLEEVE
SHAPING POSITION

OPTION 2 (MEDIUM)
CUSTOM BODY / SLEEVE
SHAPING POSITION

OPTION 3 (STEEP)
CUSTOM BODY / SLEEVE
SHAPING POSITION

EXTEND TO
1/4 FABRIC WIDTH

EXTEND TO
1/4 FABRIC WIDTH

EXTEND TO
1/4 FABRIC WIDTH

POINT A

POINT A

POINT A