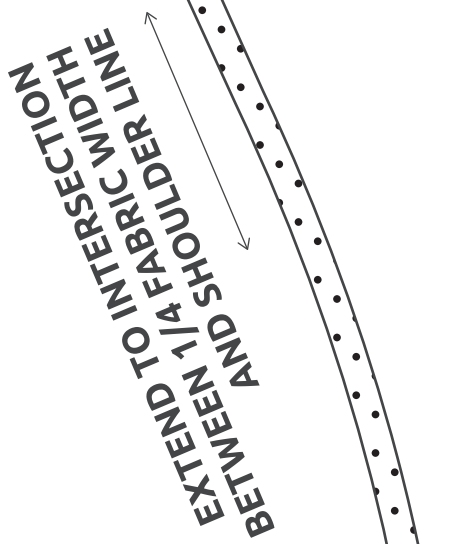


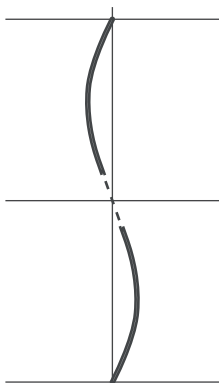
tshirts and coat SHOULDER ROTATION



1/4 FABRIC WIDTH
ANGLE TO SUIT
SLEEVE DEPTH

POINT A

SLEEVE DEPTH (STEP 1)
FABRIC EDGE (STEP 2)



STEP 1: mark point A (sleeve depth) to shoulder intersection (pivot at point A to align)

STEP 2: pivot template and repeat from fabric edge to shoulder

STEP 3: pre-finish, sew sleeve, cut, rotate and sew to rejoin

LEFT HAND SIDE

