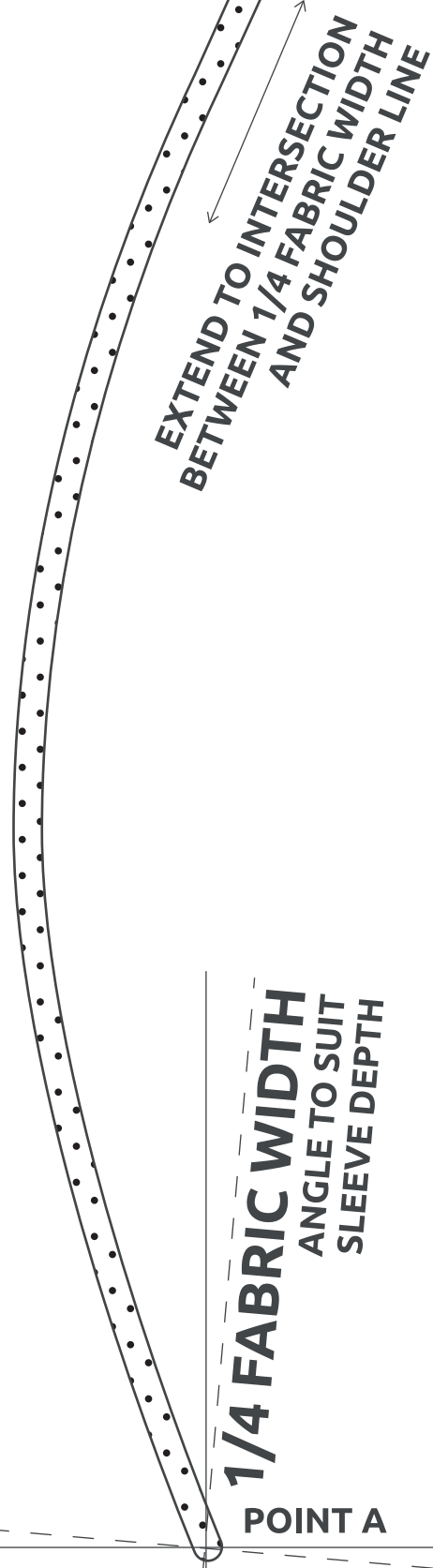
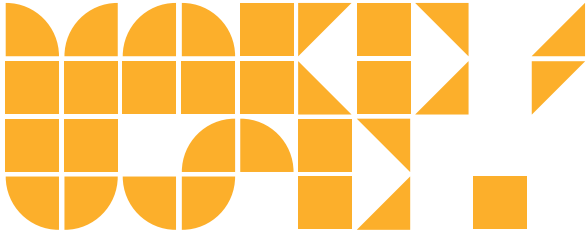
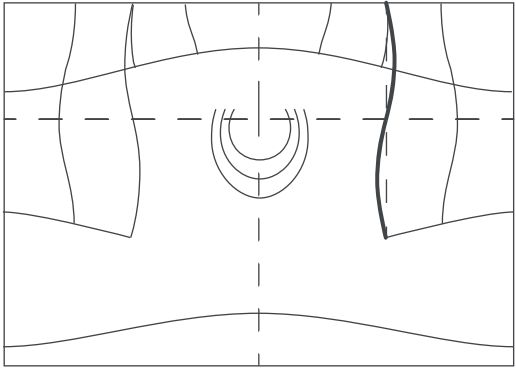


# tshirts and coat SHOULDER ROTATION



## SLEEVE DEPTH (STEP 1) FABRIC EDGE (STEP 2)

RIGHT HAND SIDE



**STEP 1:** mark point A (sleeve depth) to shoulder intersection (pivot at point A to align)

**STEP 2:** pivot template and repeat from fabric edge to shoulder

**STEP 3:** pre-finish, sew sleeve, cut, rotate and sew to rejoin

