

WAIST BAND CUT

WAIST LINE

SECONDARY DART (OPTIONAL)

SECONDARY DART (OPTIONAL)

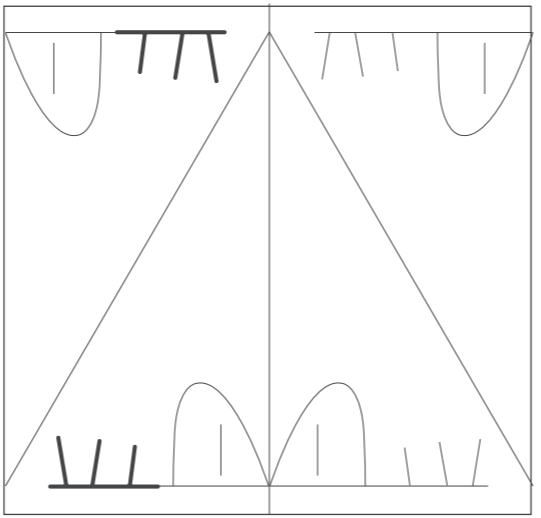
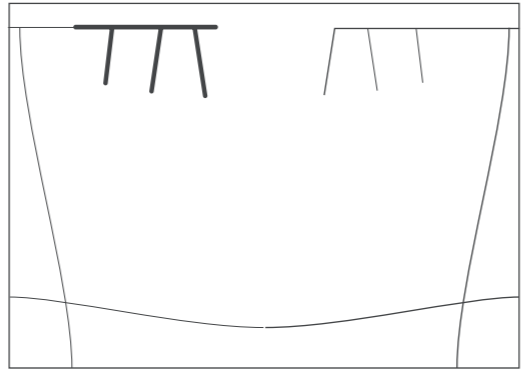
PRIMARY DART

CENTRE BACK

trouser and skirt  
WAIST DART



LEFT HAND SIDE



STEP 1: mark and pre-finish waist band and primary dart, secondary darts optional

STEP 2: cut waist band and primary dart, secondary darts optional

STEP 3: overlap dart to custom fit and sew